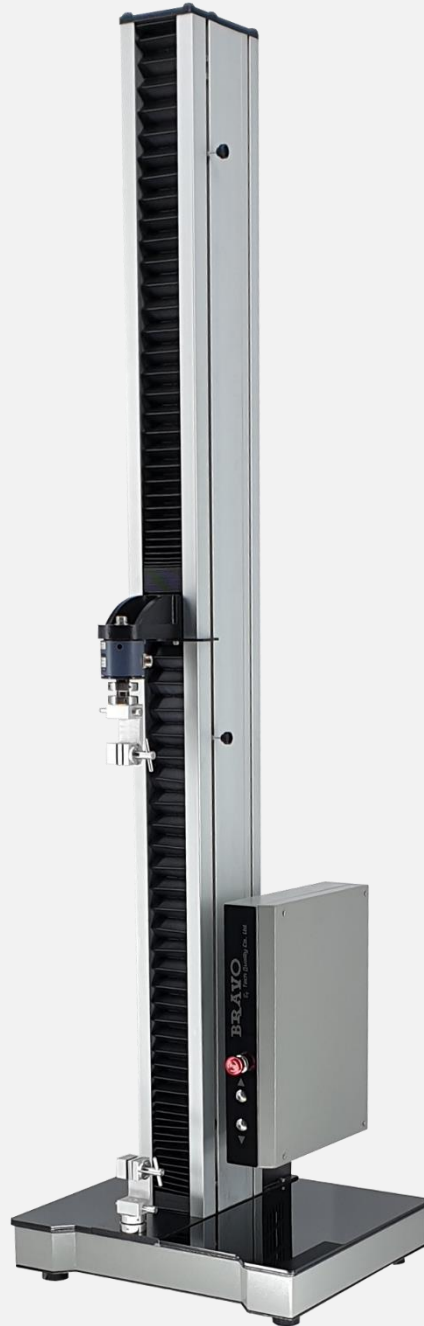




Tech-Quality Co.,Ltd

 Made In Thailand



**BRavo**

By Tech-Quality Co.,Ltd

## MS Pro Series Universal Testing Machine

The Stealth MS Pro Series desktop Universal Testing Machine are designed to test a wide spectrum of materials including metal wire & foil, plastics, rubber, textiles, paper, yarn, adhesives, ceramics, timber, foods, composites & finished components in tension, compression, flexural or shear . Maximum frame capacities are from 20N to 5KN In compliance with various international standards, such as ASTM, BS EN, JIS, ISO, IEC, TISI



**Features**

1. Panasonic servo motor drive set
2. UK or JAPAN Brand Load cell grade 0.05%
3. 10 Point calibration adjustment
4. High Accuracy Ball Screw
5. Load Resolution 1/10<sup>9</sup>
6. Force measurement range 0.1% to 100%FS
7. Data Transfer Rate to PC 1 kHz..
8. Grip to Grip Separation
9. Modern extruded profile High-quality load-frame design
10. Load Measuring System EN ISO 7500:2015 Class 0.5
11. USB Communication
12. Smart Control Box & HAND-HELD Remote Control
13. 32-bit A/D converter/ EEPROM Plug
14. Library Test Standard and Training Video

**Simple to use Test Setup**

Limit Testing Break Testing Loop Testing Preload Setup Elongation Auto Return, Over Load Protection

**Multi-control mode**

- Position Control
- Strain Control
- Force Control
- Stress Control
- Multi-step control

**Test Types**

- Tensile Testing
- Compression Testing
- Flexural Testing / Friction
- Tearing / Peeling / Shear
- Insertion / Extraction
- Creep / Relaxation / Cycle

**Applications**

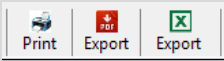
Metal, Plastic, Rubber, Textile, Synthetic, Wire, Cable, Food, Packaging, Autopart, AeroSpace, Woods, Composit etc.

**Specifications** : Bench-top frame to apply loads - from 1 KN to 5 KN capacity

Model : Stealth	MS1 Pro	MS1/LL Pro	MS1/E Pro	MS2/E Pro	MS5 Pro
Capacity (KN)	1	1	1	2	5
Load Accuracy (%) FS	0.1	0.1	0.1	0.1	0.1
Min. Load Resolution	1/10 <sup>9</sup>	1/10 <sup>9</sup>	1/10 <sup>9</sup>	1/10 <sup>9</sup>	1/10 <sup>9</sup>
Crosshead Speed (mm/min)	0.0001 – 1500	0.0001 – 1500	0.0001 – 1500	0.0001 – 1500	0.0001 - 1000
Maximum Return Speed (mm/min)	2,250	2,250	2,250	2,250	1,500
Speed Accuracy (%) FS	0.1	0.1	0.1	0.1	0.1
Extension Resolution (µm per encoder count)	0.0003	0.0003	0.0003	0.0003	0.0003
Crosshead Travel (mm)	560	1,400	850	850	850
Throat Depth (mm)	90	90	90	90	90
Weight Approx (kg)	45	70	70	70	70

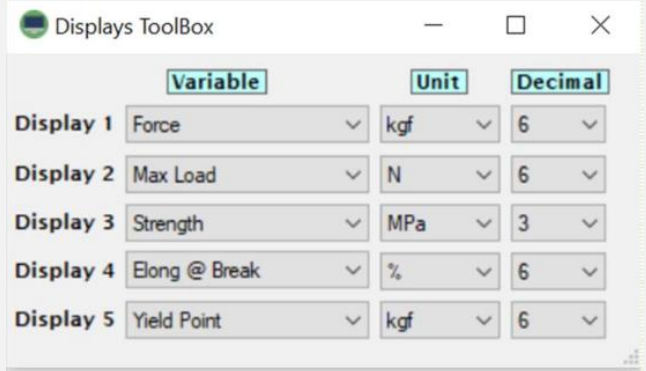
Plug 'n' Play, automatic identification of BRAVO series load cells

The Windows® 10 (64 Bit) compatible Black Hole Software

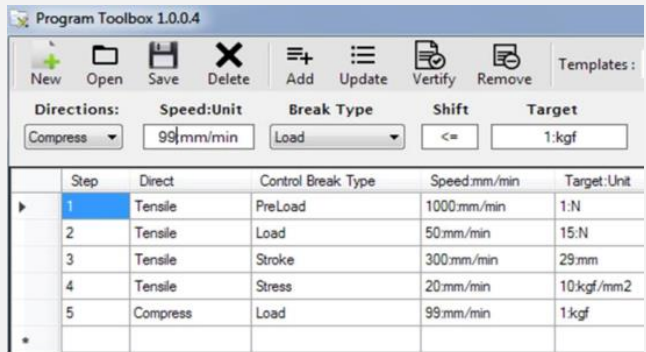


Excel CSV, Excel, PDF  
User design reports

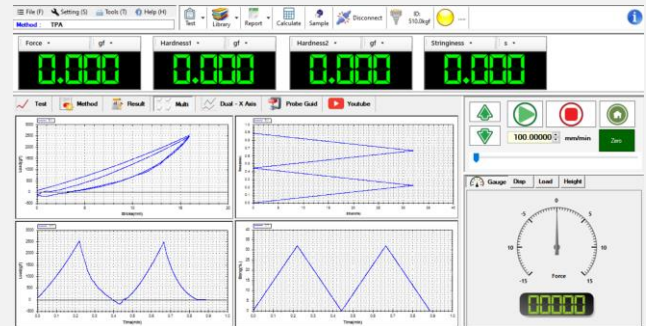
# Multi Display - Unit & Decimal Point



# Multi-stage testing with Black Hole software



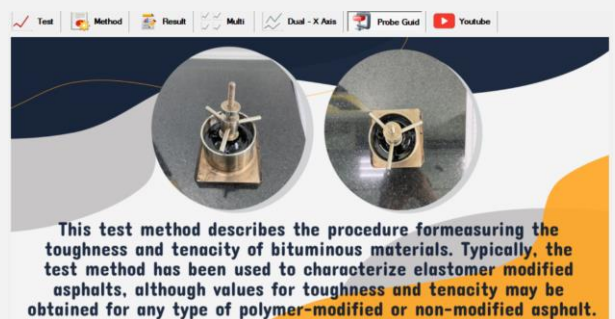
# Multi Graph Displays



# Auto test setup & load protect

- Auto Zero before Test      **Return Speed :** 100.0 mm/min
- Auto Save after Test Complete      **Load Protect :** 90 %
- Auto Return to home after Test      **18.00 kgf**

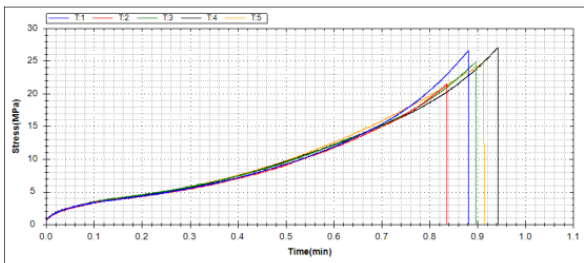
# Application Probe Guide /YouTube



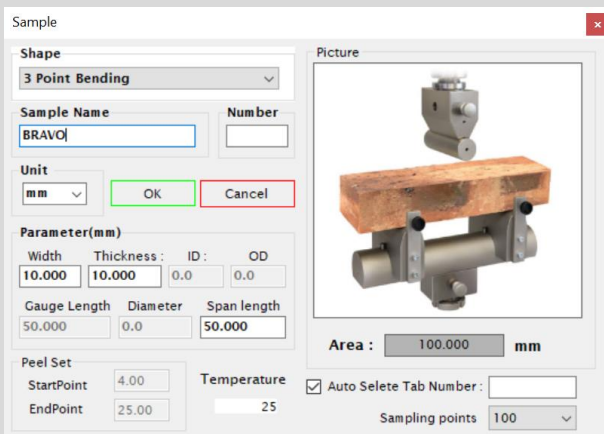
Tech Quality Co.,Ltd

Address : 2/13 Sukapiban 2 Rd.,Pravet , Bangkok 10250 Thailand.  
Tel : +662 3286878 (Auto)  
Website : www.tech-quality.com  
ID LINE : @techquality

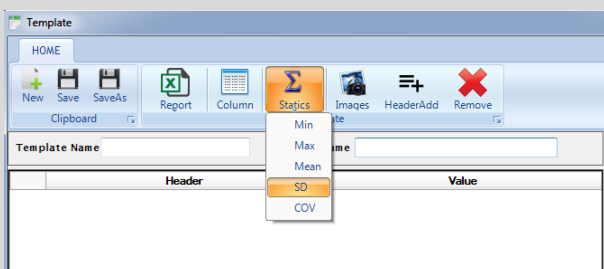
No	Date	Time	Sample Name	Max Load (N)	Strength (MPa)	Elong @ Break (%)	Stress @ 300% (MPa)
T1	15/11/2564	2:12:38 PM	AT4/2	13.9078	26.6156	636.8040	5.1302
T2	15/11/2564	2:17:27 PM	AT4/2	10.7363	21.4727	648.4660	4.9046
T3	15/11/2564	2:25:10 PM	AT4/2	12.3998	24.7996	616.2240	5.4528
T4	15/11/2564	2:28:01 PM	AT4/2	13.5199	27.0398	651.0140	5.1001
T5	15/11/2564	2:31:34 PM	AT4/2	12.3998	24.7996	620.5360	5.4551
Min				10.7363	21.4727	616.2240	4.9046
Max				13.5199	27.0398	651.0140	5.4528
Mean				12.4727	24.9455	634.6088	5.2002
SD				1.0977	2.1853	15.8273	0.2275
COV				8.8008	8.8056	2.4940	4.3750



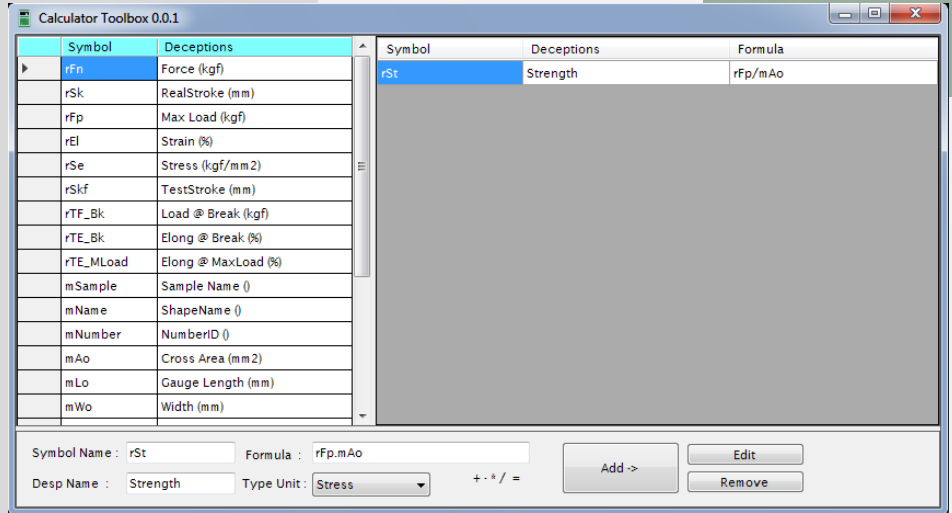
# Sample Information



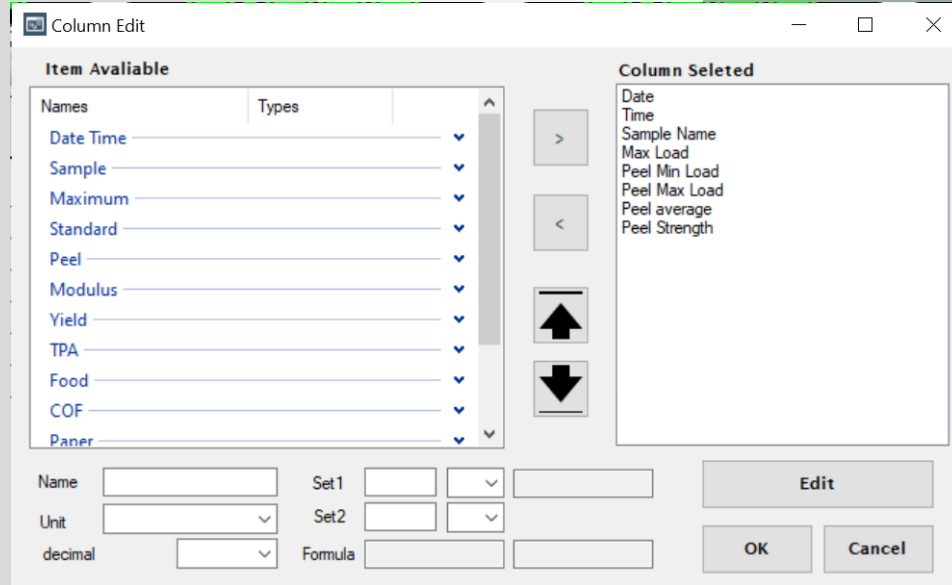
# Statistic Reports



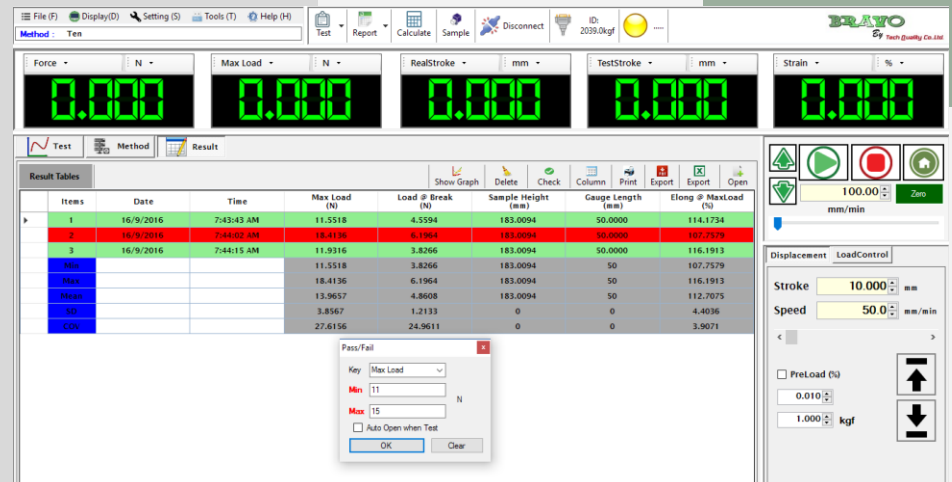
# Formula Design By User

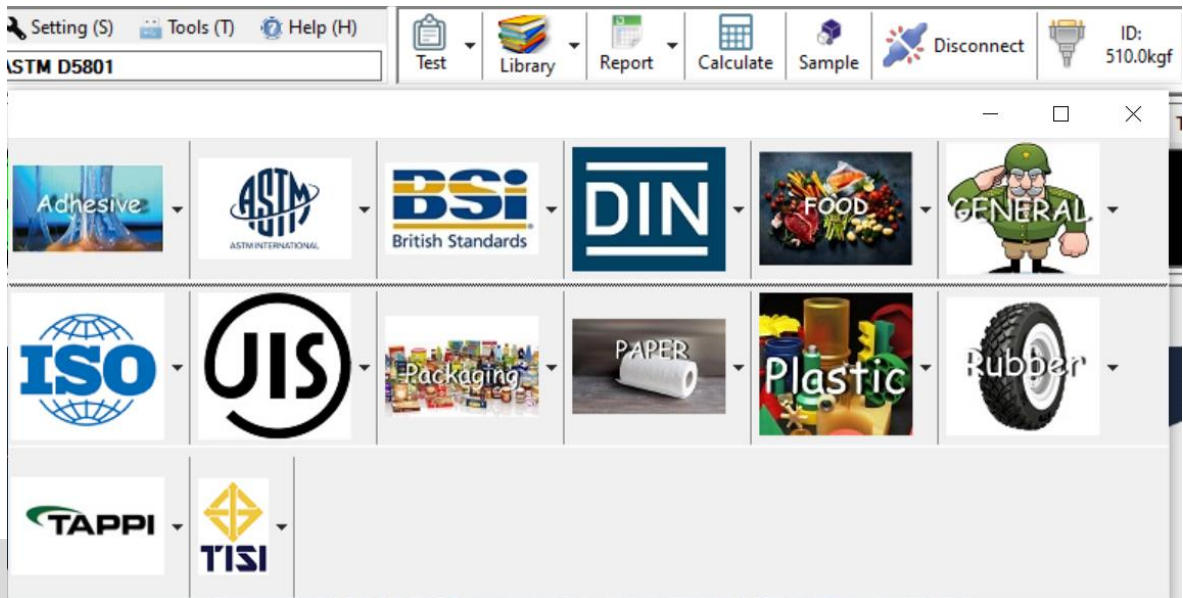


# Selectable Result



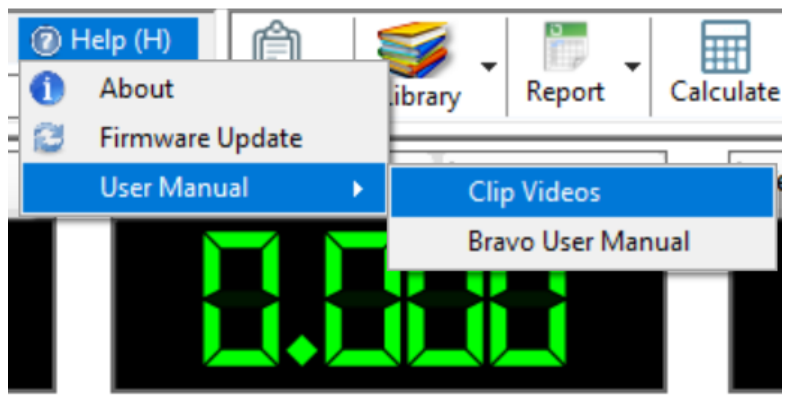
# Results can Be color Coded for Immediate Pass/fail recognition





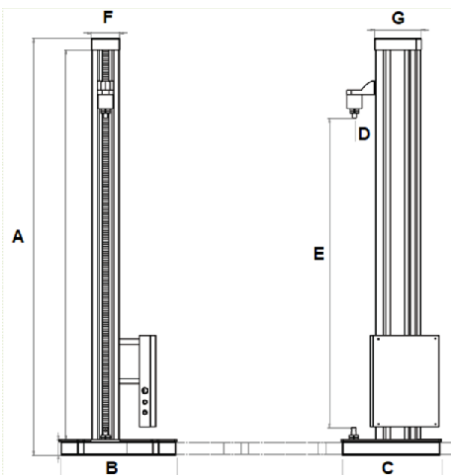
## Library Test Standard

**Easy use for new user**  
**Video Training include**



## Dimension

Unit (mm)		MS1	MS1/LL	MS1/E	MS2/E	MS5
A	Machine Height	1078	1818	1378	1378	1378
B	Machine Width	510	510	510	510	510
C	Machine Depth	440	440	440	440	440
D	Throat Depth	90	90	90	90	90
E	Crosshead Travel	560	1400	850	850	850
F	Column Width	120	120	120	120	120
G	Column Depth	200	200	200	200	200



## Ordering Information

 Tech-Quality Co.,Ltd  
 2/13 Sukapiban 2 Rd., Pravet,  
 Pravet Bangkok 10250 Thailand  
 Tel : +662 328 6878  
 Fax : +662 328 6818  
 www.tech-quality.com  
 Email : info@tech-quality.com