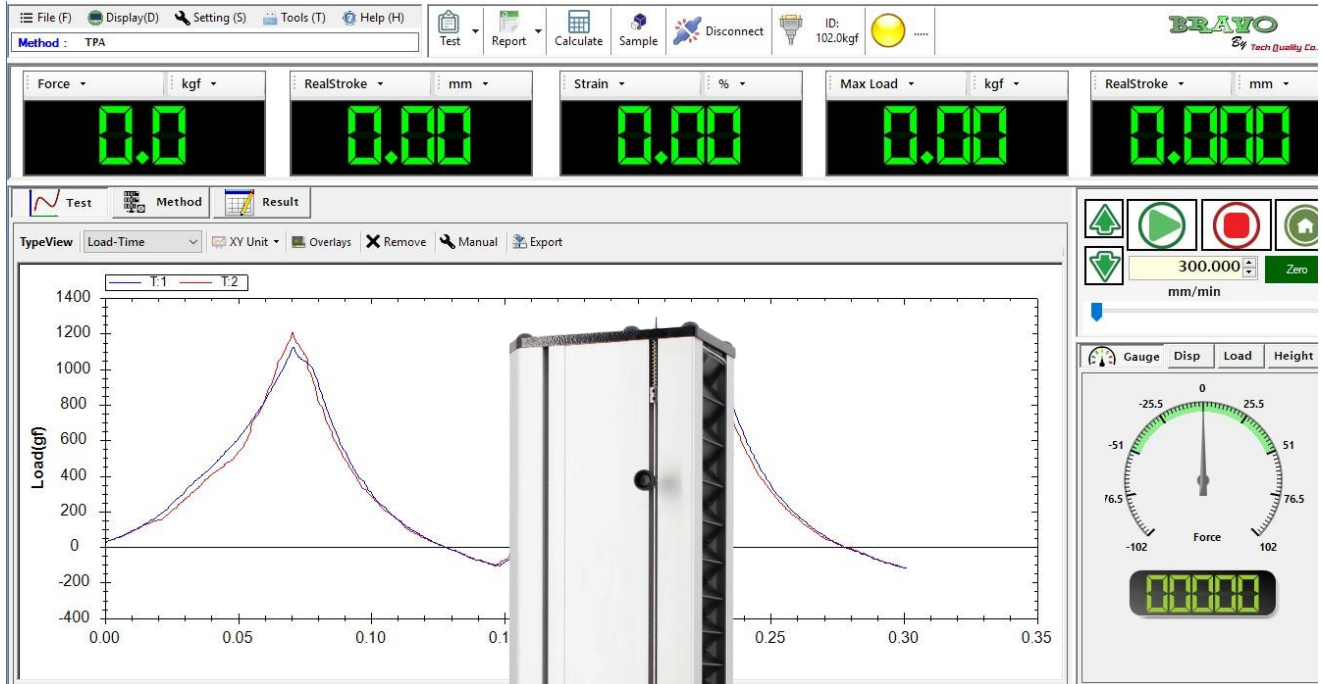




Tech-Quality Co., Ltd.

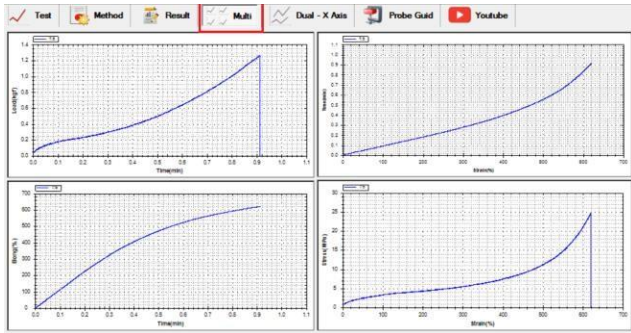
 **Made In Thailand**



**BRAVO**  
By Tech-Quality Co., Ltd

# MTS Prime Universal Testing Machine

The Stealth MTS Prime Series desktop Universal Testing Machine are designed to test a wide spectrum of materials including wire & foil, plastics, rubber, textiles, paper, yarn, adhesives, ceramics, timber, foods, composites & finished components in tension, compression, flexural or shear. Maximum frame capacities are from 20N to 1,000N in compliance with various international standards, such as ASTM, BS EN, JIS, ISO, IEC, TISI



## Specifications

- MTS Prime Machine Capacity : 1KN
- Crosshead Speed Range : 25-800mm/min
- Displacement Resolution : 0.005mm
- Crosshead Travel : 550 mm
- Load Cell Accuracy : +/- 0.5% FS
- Speed Accuracy : 2% FS
- Data Transfer Rate to PC : 1 kHz..
- Operating Temperature : 5° to 35°C (41° to 95°F)
- Communication port : USB
- Supply Voltage : 230Vac ±10% 50-60 Hz  
3Amp
- High Accuracy Ball Screw Type
- Weight Approx : 30kg
- Power : 220Vac/ 50Hz
- Warranty 1 Year : 1 Year

## Features

1. LOW COST
2. "BRAVO" Load cell
3. US Digital Encoder
4. Modern extruded profile High-quality load-frame design
5. 10 Point calibration adjustment
6. High Accuracy Ball Screw
7. Force Resolution 1/500,000 FS
8. Force measurement range 2% to 100%FS
9. Data Transfer Rate to PC 1 kHz...
10. BlackHole Data analysis and control Software
11. Multi graph display
12. Dual- X Axis Graph
13. Function Probe Guide
14. YouTube Guide
15. Video Training on BlackHole Software
16. Standard Library Test Set up

## Simple to use Test Setup

Limit Testing Break Testing Loop Testing Preload  
Setup Elongation Auto Return, Over Load  
Protection, Auto Save after test

## Multi-control mode

- Constant speed
- Constant Displacement
- Multi-step control

## Applications

- Bulk Analysis
- Tension / Compression
- Extrusion / Back Extrusion
- Puncture & Penetration
- Shear
- Bend & Break
- Peel & Seal

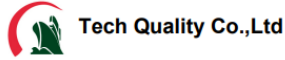


Excel , PDF  
User design reports

## Multi Display & Decimal Point

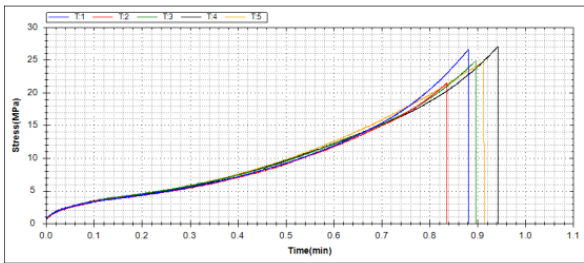
Displays Toolbox

	Variable	Unit	Decimal
Display 1	Force	N	2
Display 2	Max Load	N	3
Display 3	Stress @ Elong	MPa	3
Display 4	Elong @ Break	%	3
Display 5	Strength	MPa	3



Address : 2/13 Sukapiban 2 Rd.,Pravet , Bangkok 10250 Thailand.  
Tel : +662 3286878 (Auto)  
Website : www.tech-quality.com  
ID LINE : @techquality

No	Date	Time	Sample Name	Max Load (N)	Strength (MPa)	Elong @ Break (%)	Stress @ 300% (MPa)
T1	15/11/2564	2:12:39 PM	AT4/2	13.3078	26.6156	636.6045	5.1382
T2	15/11/2564	2:17:27 PM	AT4/2	10.7363	21.4727	648.4660	4.9046
T3	15/11/2564	2:25:10 PM	AT4/2	12.3998	24.7996	616.2240	5.4528
T4	15/11/2564	2:28:01 PM	AT4/2	13.5199	27.0398	651.0140	5.1001
T5	15/11/2564	2:31:34 PM	AT4/2	12.3998	24.7996	620.5360	5.4051
Min				10.7363	21.4727	616.2240	4.9046
Max				13.5199	27.0398	651.0140	5.4528
Mean				12.4727	24.8455	634.6086	5.2002
SD				1.0977	2.1953	15.8273	0.2275
COV				8.8008	8.8006	2.4940	4.3750



## Multi-stage testing with Bravo software

Program Toolbox 1.0.0.4

Directions: Compress | Speed:Unit: 99mm/min | Break Type: Load | Shift: <= | Target: 1:kgf

Step	Direct	Control Break Type	Speed:mm/min	Target:Unit
1	Tensile	PreLoad	1000mm/min	1:N
2	Tensile	Load	50mm/min	15:N
3	Tensile	Stroke	300mm/min	29mm
4	Tensile	Stress	20mm/min	10:kgf/mm2
5	Compress	Load	99mm/min	1:kgf

## Sample Information

Sample

Shape: Peel

Sample Name: Seal Strength | Number: TQ-1

Unit: mm

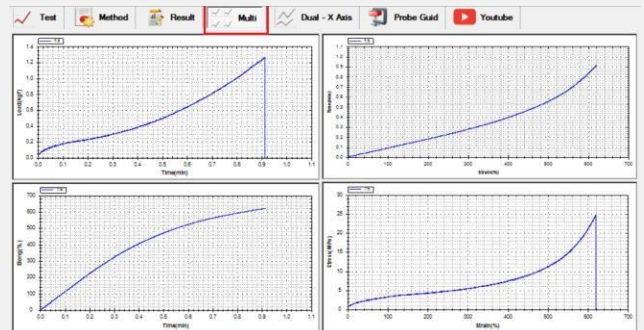
Parameter(mm):  
 Width: 1.000 | Thickness: 1.000 | ID: 0.0 | OD: 0.0  
 Gauge Length: 1.000 | Diameter: 0.0 | Span length: 50.000

Peel Set:  
 StartPoint: 4.00 | EndPoint: 25.00

Area: 1.000 mm

Auto Selete Tab Number: | Sampling points: 1000

## Multi Graph Display



## Statistic Reports

Report window showing statistics and company information.

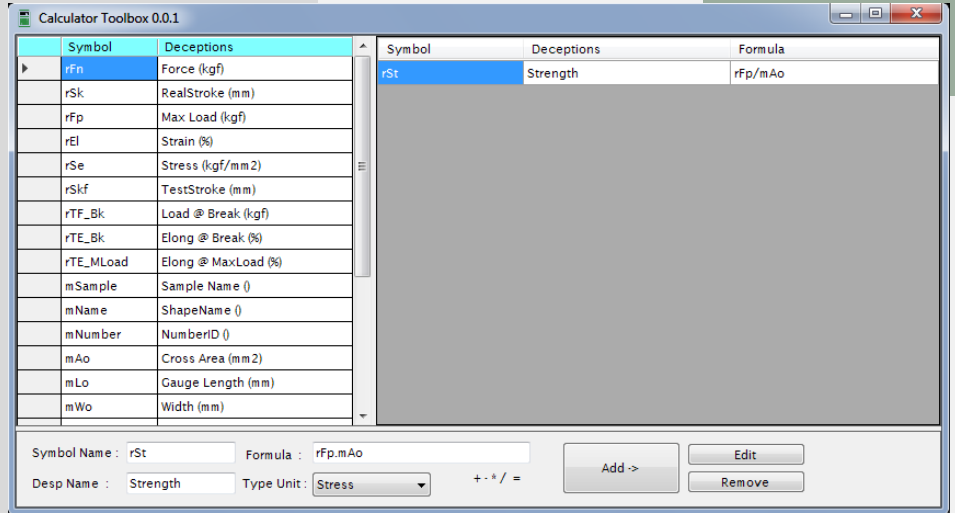
Template Name: Maximum | Company Name: Maximum  
 Header: Address: 2/13 Sukapiban 2 Rd., Bangkok 10250 Thailand.  
 Tel: +662 3286878 | Mdn: | Website: www.tech-quality.com | ID LINE: @techquality

## Auto test setup & load protect

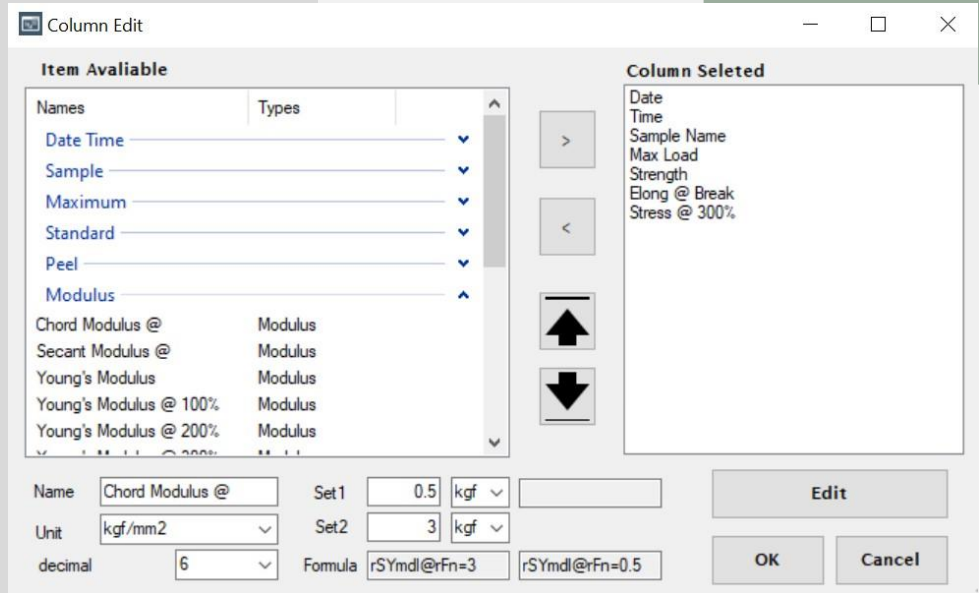
Auto Zero before Test  
 Auto Save after Test Complete  
 Auto Return to home after Test  
 Auto Return to Limit after Test

Setting:  
 Return Speed: 900.0 mm/min | Load Protect: 80 % 16.00 kgf  
 Sensor:  Stroke  Rub Extensometer  Extensometer

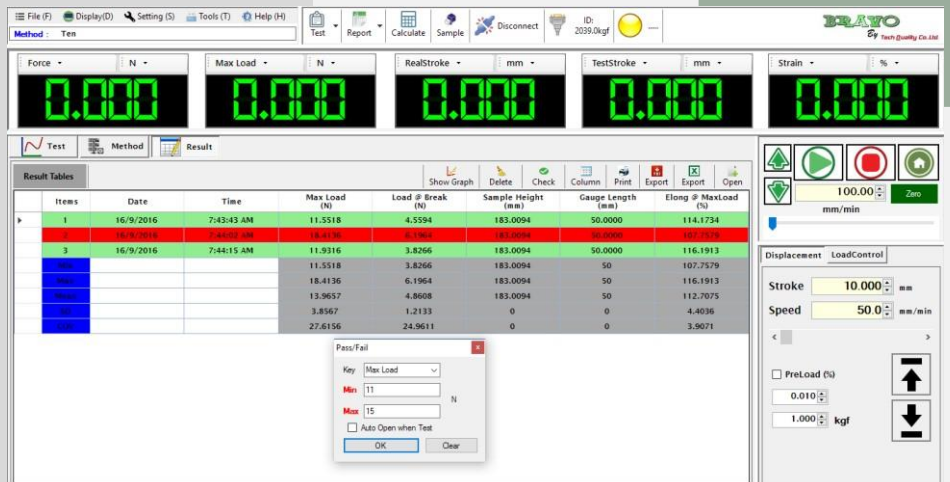
# Formula Design By User



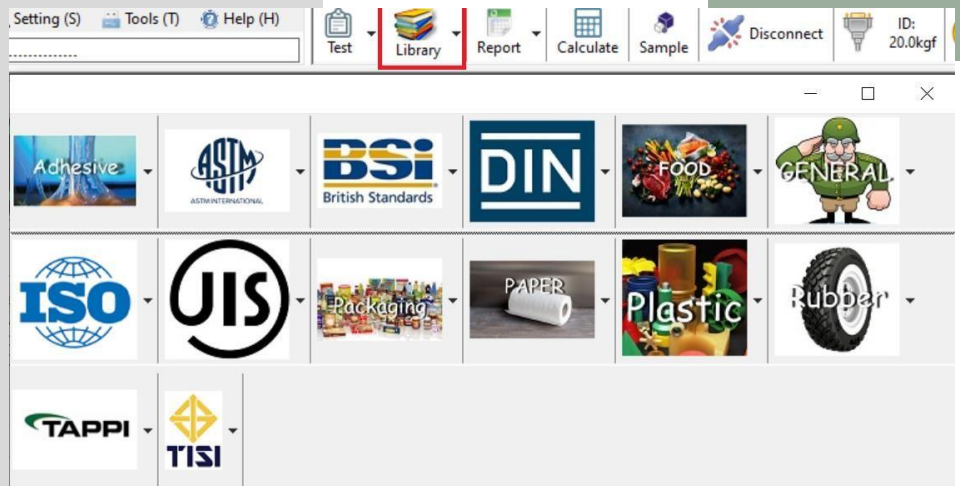
# Selectable Result



# Color Coded for Immediate Pass/fail



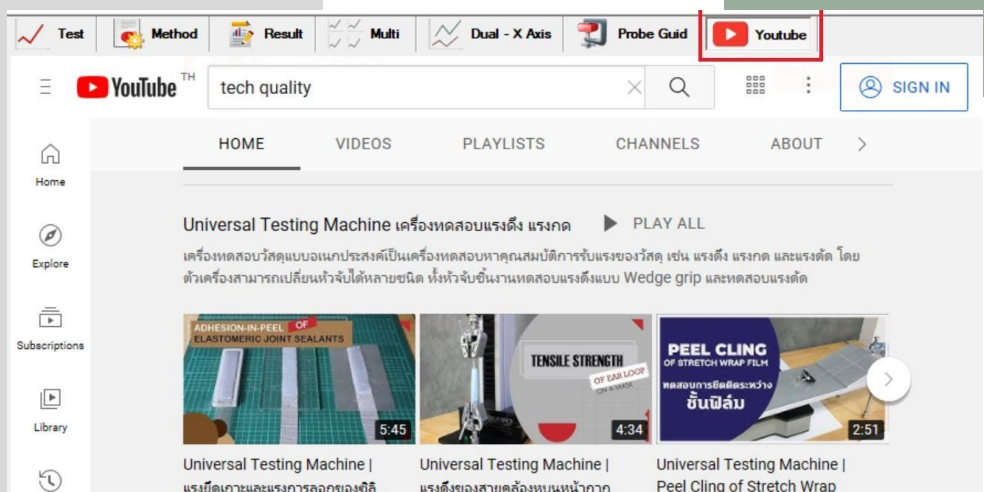
# Standard Library



# Probe Guide



# YouTube Guide



# BRAYO

By *Tech Quality Co.,Ltd.*



## Ordering Information



Tech-Quality Co.,Ltd



2/13 Sukapiban 2 Rd., Pravet,  
Pravet Bangkok 10250 Thailand



Tel : +662 328 6878



Fax : +662 328 6818



[www.tech-quality.com](http://www.tech-quality.com)



Email : [info@tech-quality.com](mailto:info@tech-quality.com)