



Tech-Quality Co.,Ltd

 Made In Thailand



BRAVO

By Tech-Quality Co.,Ltd

MT Pro Series Universal Testing Machine

The Stealth MT30 Pro Series desktop Universal Testing Machine are designed to test a wide spectrum of materials including metal wire & foil, plastics, rubber, textiles, paper, yarn, adhesives, ceramics, timber, foods, composites & finished components in tension, compression, flexural or shear. Maximum frame capacities are 20N to 50 KN in compliance with various international standards, such as ASTM, BS EN, JIS, ISO, IEC, TISI, DIN



Features

1. Panasonic servo motor drive set
2. UK or JAPAN Brand Load cell grade 0.05%
3. 10 Point calibration adjustment
4. High Accuracy Ball Screw
5. Load Resolution 1/500000
6. Force measurement range 0.1% to 100%FS
7. Data Transfer Rate to PC 1 kHz..
8. Automatically sample Height measurement
9. Modern extruded profile High-quality load-frame design
10. Load Measuring System EN ISO 7500:2015 Class 0.5
11. Dual-X Axis Graph and multi Graph Display
12. 32-bit A/D converter/ EEPROM Plug
13. Standard Library Test Method
14. Calibration LAB ISO:17025

Simple to use Test Setup

Limit Testing Break Testing Loop Testing Preload Setup Elongation Auto Return, Over Load Protection

Multi-control mode

- Constant speed
- Position
- Load Rate
- Constant Stress & Strain
- Multi-step control
- USB Interface

Test Types

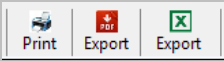
Tensile Testing
Compression Testing
Flexural Testing / Friction
Tearing / Peeling
Insertion / Extraction
Creep/Relaxation
Bending

Applications

Metal, Plastic, Rubber, Textile, Synthetic, Wire, Cable, Food, Packaging, Autopart, Spring, AeroSpace, Woods, Composit, Aluminium etc.

Specifications : Bench-top frame to apply loads - from 30KN capacity

Model : Stealth	MT5 Pro	MT10 Pro	MT20 Pro	MT30 Pro
Capacity (KN)	5	10	20	30
Load Accuracy (%) FS	0.1	0.1	0.1	0.1
Min. Load Resolution	1/10 ⁹	1/10 ⁹	1/10 ⁹	1/10 ⁹
Crosshead Speed (mm/min)	0.0001 - 750	0.0001 - 750	0.0001 - 750	0.0001 - 500
Speed Accuracy (%) FS	0.1	0.1	0.1	0.1
Extension Resolution (µm per encoder count)	0.0003	0.0003	0.0003	0.0003
Crosshead Travel (mm)	1,080	1,080	1,080	1,080
Crosshead Travel Extended (mm)	1,308	1,308	1,308	1,308
Width Between Columns (mm) can be offered upon request	460	460	460	460
Weight Approx (kg)	130	130	130	160
Load Measuring System : EN ISO 7500-1:2015, Class 0.5 ASTM E4				
Plug 'n' Play, automatic identification of BRAVO series load cells				
The Windows® 10 (64 Bit) compatible Black Hole Software				
Power 220Vac/ 50Hz				
Operating Temperature 5° to 35°C (41° to 95°F)				
Warranty 1 Year				

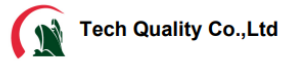


Excel , PDF
User design reports

Multi Display & Decimal Point

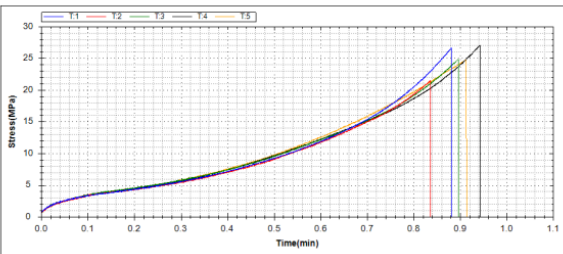
Displays ToolBox

	Variable	Unit	Decimal
Display 1	Force	N	2
Display 2	Max Load	N	3
Display 3	Stress @ Elong	MPa	3
Display 4	Elong @ Break	%	3
Display 5	Strength	MPa	3



Address : 2/13 Sukapiban 2 Rd.,Pravet , Bangkok 10250 Thailand.
Tel : +662 3286878 (Auto)
Website : www.tech-quality.com
ID LINE : @techquality

No	Date	Time	Sample Name	Max Load (N)	Strength (MPa)	Elong @ Break (%)	Stress @ 300% (MPa)
T1	15/11/2564	2:12:39 PM	AT42	13.3078	26.6156	636.8040	5.1382
T2	15/11/2564	2:17:27 PM	AT42	10.7383	21.4727	648.4960	4.9046
T3	15/11/2564	2:25:10 PM	AT42	12.3998	24.7998	618.2240	5.4528
T4	15/11/2564	2:28:01 PM	AT42	13.5199	27.0398	651.0140	5.1001
T5	15/11/2564	2:31:34 PM	AT42	12.3998	24.7998	620.5300	5.4051
Min				10.7383	21.4727	618.2240	4.9046
Max				13.5199	27.0398	651.0140	5.4528
Mean				12.4727	24.9456	634.6988	5.2002
SD				1.0977	2.1953	15.8273	0.2275
COV				8.8008	8.8006	2.4840	4.3750



Multi-stage testing with Bravo software

Program Toolbox 1.0.0.4

New Open Save Delete Add Update Verify Remove Templates :

Directions: Compress Speed:Unit 99mm/min Break Type Load Shift <= Target 1:kgf

Step	Direct	Control	Break Type	Speed:mm/min	Target:Unit
1	Tensile	PreLoad		1000mm/min	1:N
2	Tensile	Load		50mm/min	15:N
3	Tensile	Stroke		300mm/min	29mm
4	Tensile	Stress		20mm/min	10:kgf/mm2
5	Compress	Load		99mm/min	1:kgf

Sample Information

Shape: 3 Point Bending

Sample Name: AT4/2 Number: M

Unit: mm

Parameter(mm): Width 10.000 Thickness 10.000 ID 0.0 OD 0.0 Gauge Length 50.000 Diameter 0.0 Span length 50.000

Peel Set: StartPoint 4.00 EndPoint 25.00 Temperature 25

Area: 100.000 mm

Auto Selete Tab Number: Sampling points 100

Multi Graph Display

Method: TPA

Force: 0.000 Hardness: 0.000 Strength: 0.000

100.00000 mm/min

Statistic Reports

Report Column Statics Images HeadersAdd Remove

Template Name: Maximum Company Name: Tech Quality Co.,Ltd

Header	Value
Address	2/13 Sukapiban 2 Rd.,Pravet , Bangkok 10250 Thailand.
Tel	+662-3286878
Website	www.techquality.com
ID LINE	@techquality

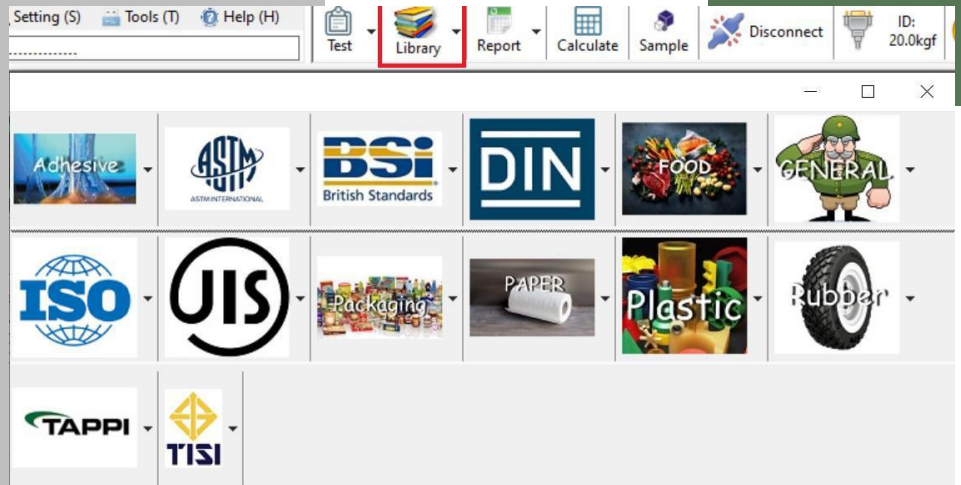
Auto test setup & load protect

Auto Zero before Test
 Auto Save after Test Complete
 Auto Return to home after Test
 Auto Return to Limit after Test

Setting: Return Speed: 900.0 mm/min Load Protect: 80 % 16.00 kgf

Sensor: Stroke Rub Extensometer Extensometer

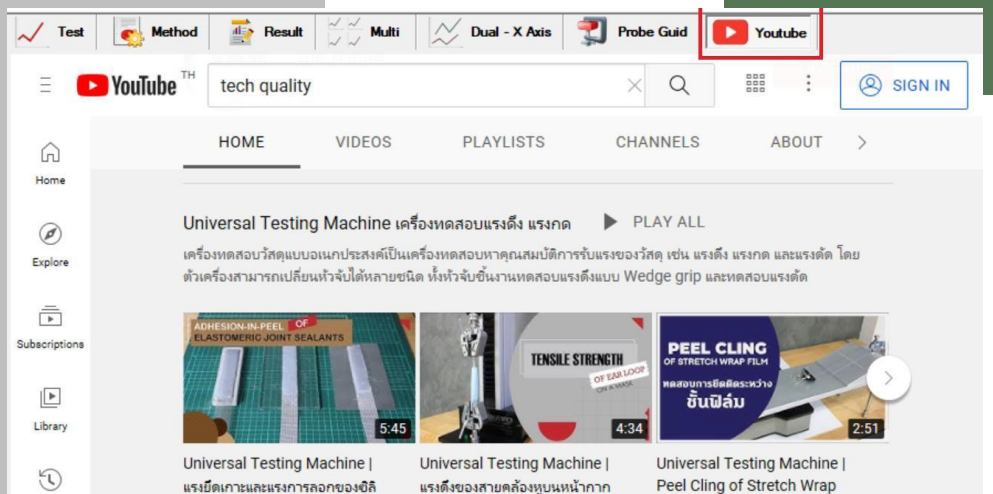
Library



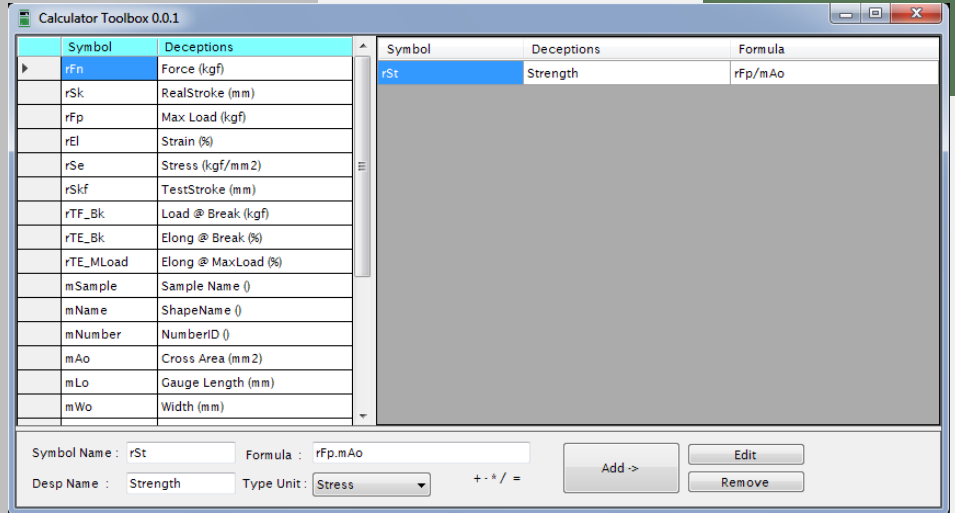
Probe Guide



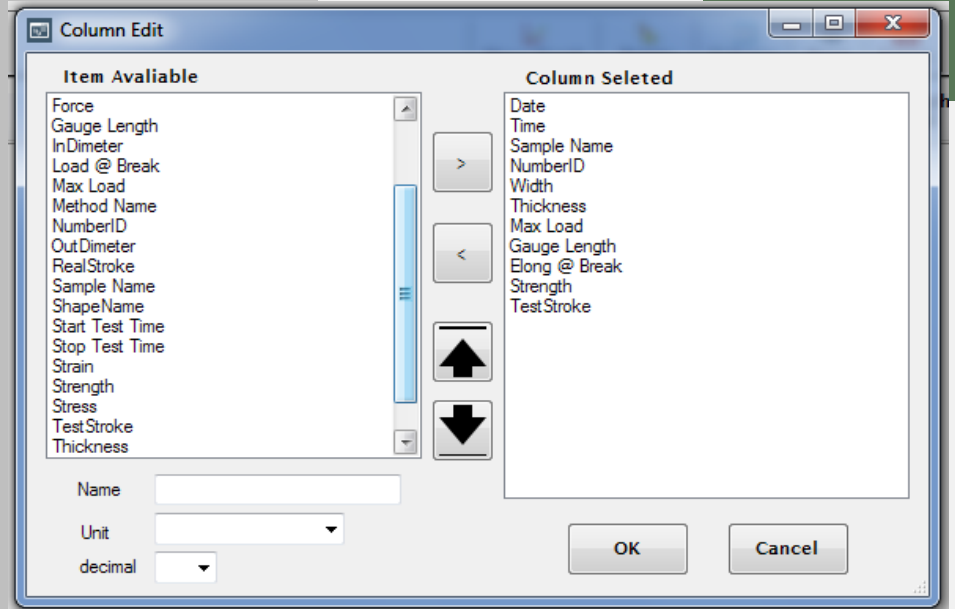
YouTube Guide



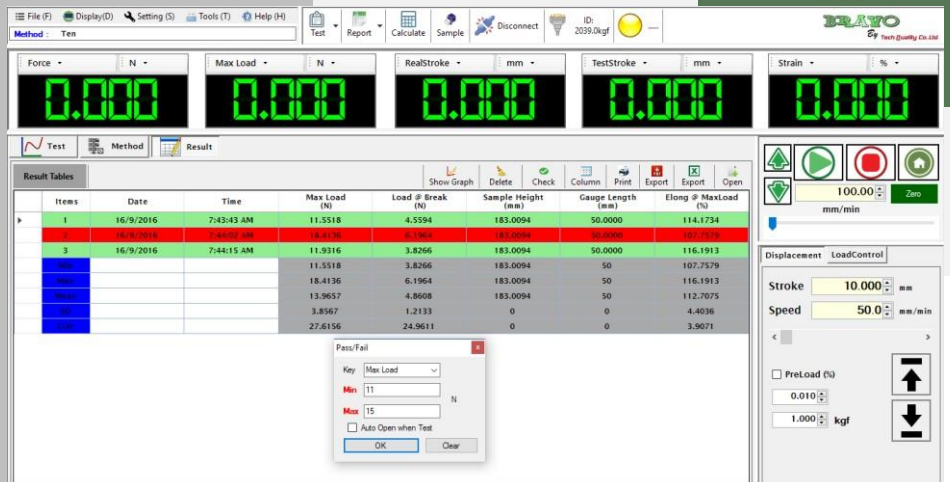
Formula Design By User



Selectable Result

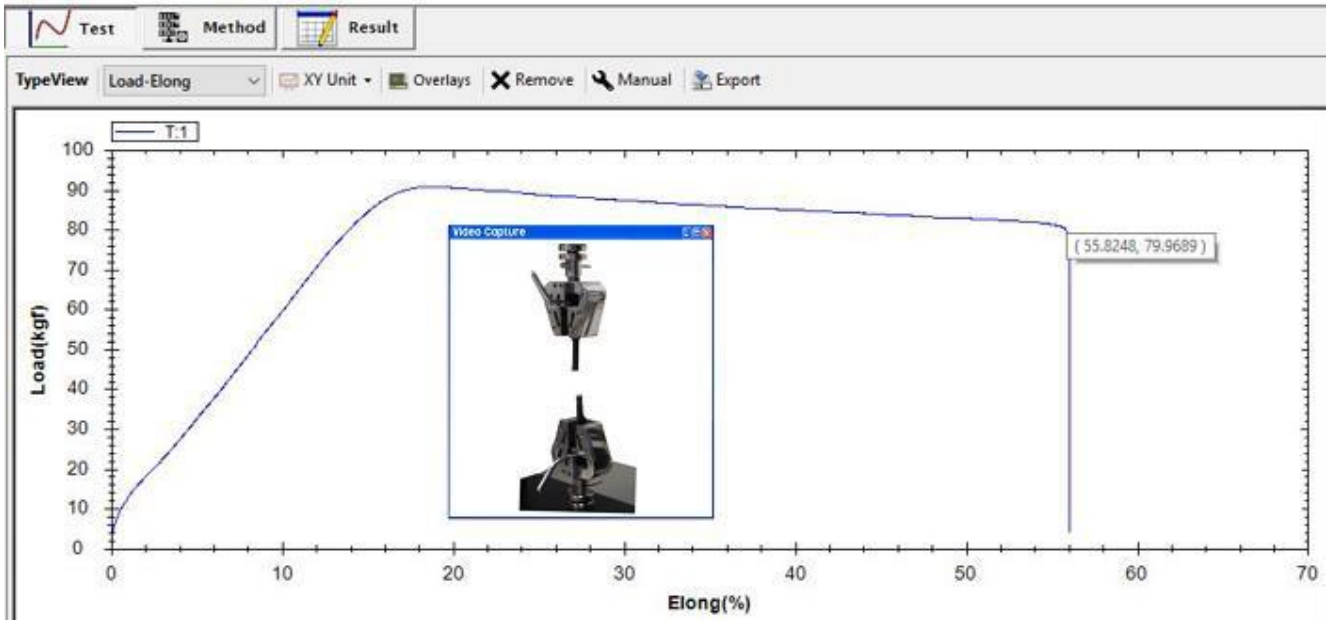


Results can Be color Coded for Immediate Pass/fail recognition



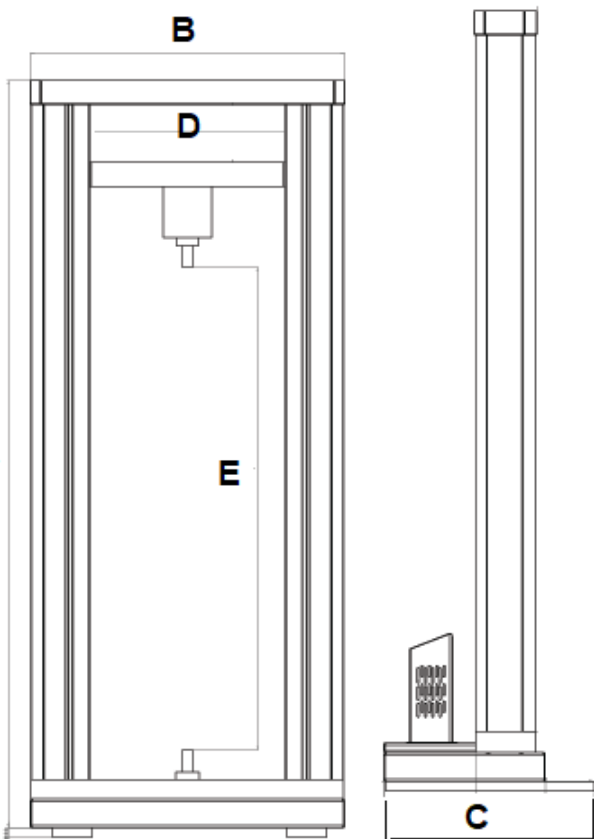
 Modern Aluminum extruded profile High-quality load-frame design





Video and still capture

Video Capture and Synchronisation System enables UTM users to view 20fps video recordings frame by frame. It's a fantastic tool for teaching physical material test for those new to the field, or to help you gain a frame-by-frame understanding of your product strength.



Dimension

		mm
A	Machine Height	1550
B	Machine Width	698
C	Machine Depth	424
D	Between Columns	460
E	Crosshead Travel	1080

Ordering Information



Tech-Quality Co.,Ltd



2/13 Sukapiban 2 Rd., Pravet,
Pravet Bangkok 10250 Thailand



Tel : +662 328 6878



Fax : +662 328 6818



www.tech-quality.com



Email : info@tech-quality.com