



Tech-Quality Co., Ltd

 **Made In Thailand**



## **MF Pro Series** **Universal Testing Machine**

**BRAVO** *By*  
Tech-Quality Co., Ltd

The Stealth MF200 Pro Series floor models Universal Testing Machine are designed to test a wide spectrum of materials including metal wire & foil, plastics, rubber, textiles, paper, yarn, adhesives, ceramics, timber, foods, composites & finished components in tension, compression, flexural or shear .

Maximum frame capacities are from 20N to 200KN In compliance with various international standards, such as ASTM, BS EN, JIS, ISO, IEC, TSI



## Features

1. Panasonic servo motor drive set
2. USA Brand Load cell grade 0.5%
3. 10 Point calibration adjustment
4. High Accuracy Ball Screw
5. Load Resolution 1/500000
6. Force measurement range 0.1% to 100%FS
7. Data Transfer Rate to PC 1 kHz..
8. Automatically sample Height measurement
9. Modern extruded profile High-quality load-frame design
10. Load Measuring System EN ISO 7500:2015 Class 0.5
11. Wireless Communication
12. Dual-X Axis Graph and multi Graph Display
13. 32-bit A/D converter/ EEPROM Plug
14. Standard Library Test Method

## Simple to use Test Setup

Limit Testing Break Testing Loop Testing Preload Setup  
Elongation Auto Return, Over Load Protection

## Multi-control mode

- Constant speed
- Position
- Load Rate
- Constant Stress & Strain
- Multi-step control

## Test Types

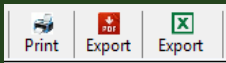
- Tensile Testing
- Compression Testing
- Flexural Testing / Friction
- Tearing / Peeling
- Insertion / Extraction
- Creep/Relaxation

## Applications

Metal, Plastic, Rubber, Textile, Synthetic, Wire, Cable,  
Food, Packaging, Autopart, Spring, AeroSpace,  
Woods, Composit etc.

**Specifications** : Bench-top frame to apply loads - from 20KN to 200 KN capacity

Model : Stealth	MF200 Pro
Capacity (KN)	200
Load Accuracy (%) FS	0.5
Min. Load Resolution	1/10 <sup>9</sup>
Crosshead Speed (mm/min)	0.001 - 250
Speed Accuracy (%) FS	0.1
Extension Resolution (µm per encoder count)	0.0003
Crosshead Travel (mm)	1,000
Crosshead Travel Extended (mm)	Call
Width Between Columns (mm) can be offered upon request	600
Weight Approx (kg)	1800
Load Measuring System : EN ISO 7500-1:2015, Class 0.5 ASTM E4	
Plug 'n' Play, automatic identification of BRAVO series load cells	
The Windows® 10 (64 Bit) compatible Black Hole Software	
Power 220Vac/ 50Hz	
Operating Temperature 5° to 35°C (41° to 95°F)	
Warranty 1 Year	

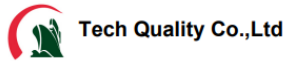


Excel , PDF  
User design reports

## Multi Display & Decimal Point

Displays ToolBox

	Variable	Unit	Decimal
Display 1	Force	N	2
Display 2	Max Load	N	3
Display 3	Stress @ Elong	MPa	3
Display 4	Elong @ Break	%	3
Display 5	Strength	MPa	3



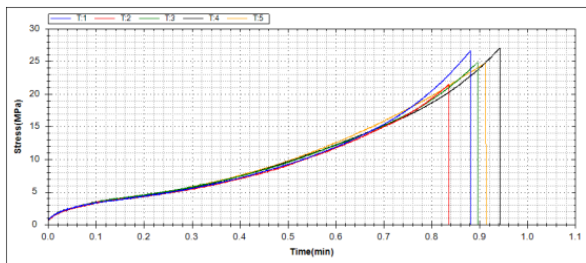
Address : 2/13 Sukapiban 2 Rd., Pravet , Bangkok 10250 Thailand.

Tel : +662 3286878 (Auto)

Website : www.tech-quality.com

ID LINE : @techquality

No	Date	Time	Sample Name	Max Load (N)	Strength (MPa)	Elong @ Break (%)	Stress @ 300% (MPa)
T1	15/11/2564	2:12:39 PM	AT4/2	13.3078	26.6156	636.8040	5.1382
T2	15/11/2564	2:17:27 PM	AT4/2	10.7363	21.4727	648.4660	4.9046
T3	15/11/2564	2:25:10 PM	AT4/2	12.3998	24.7998	616.2240	5.4528
T4	15/11/2564	2:28:01 PM	AT4/2	13.5199	27.0398	651.0140	5.1901
T5	15/11/2564	2:31:34 PM	AT4/2	12.3998	24.7998	620.5360	5.4951
Min				10.7363	21.4727	616.2240	4.9046
Max				13.5199	27.0398	651.0140	5.4528
Mean				12.4727	24.9455	634.6088	5.2002
SD				1.0977	2.1953	15.8273	0.2275
COV				8.8008	8.8006	2.4940	4.3750



## Multi-stage testing with Bravo software

Program Toolbox 1.0.0.4

Directions: Compress | Speed:Unit: 99mm/min | Break Type: Load | Shift: <= | Target: 1:kgf

Step	Direct	Control Break Type	Speed:mm/min	Target:Unit
1	Tensile	PreLoad	1000mm/min	1:N
2	Tensile	Load	50mm/min	15:N
3	Tensile	Stroke	300mm/min	29:mm
4	Tensile	Stress	20mm/min	10:kgf/mm2
5	Compress	Load	99mm/min	1:kgf

## Sample Information

Shape: 3 Point Bending

Sample Name: AT4/2 | Number: M

Unit: mm

Parameter(mm): Width: 10.000, Thickness: 10.000, ID: 0.0, OD: 0.0

Gauge Length: 50.000, Diameter: 0.0, Span length: 50.000

Peel Set: StartPoint: 4.00, EndPoint: 25.00, Temperature: 25

Area: 100.000 mm

Auto Selete Tab Number: | Sampling points: 100

## Multi Graph Display

## Statistic Reports

Template Name: Maximum | Company Name: Quality Co.,Ltd

Header	Value
Address	2/13 Sukapiban 2 Rd., Pravet, Bangkok, 10250 Thailand.
Tel	+662 3286878
Website	www.tech-quality.com
ID LINE	@techquality

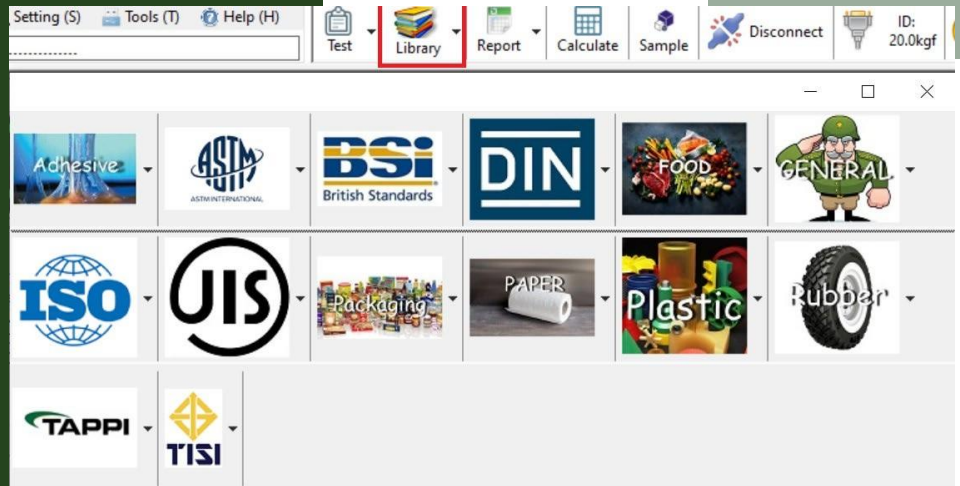
## Auto test setup & load protect

Auto Zero before Test  
 Auto Save after Test Complete  
 Auto Return to home after Test  
 Auto Return to Limit after Test

Setting: Return Speed: 900.0 mm/min | Load Protect: 80 % | 16.00 kgf

Sensor:  Stroke  Rub Extensometer  Extensometer

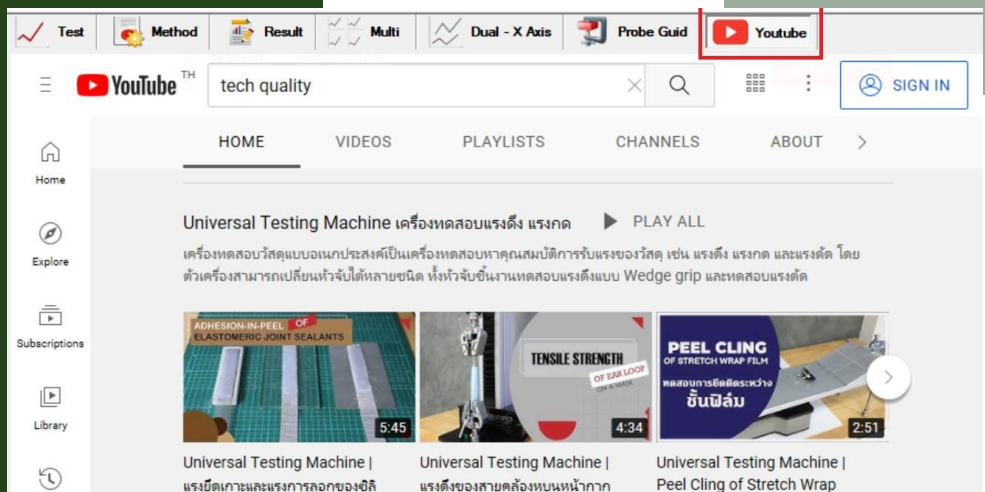
# Standard Library



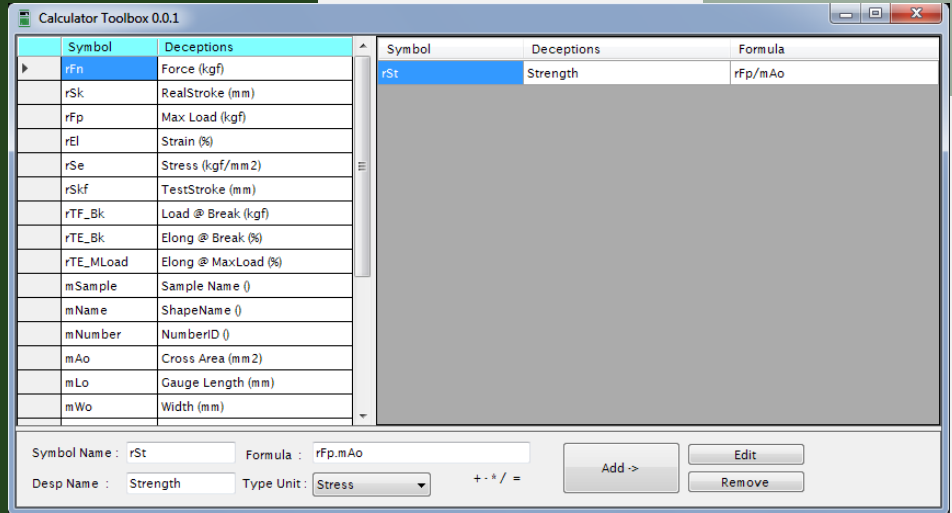
# Probe Guide



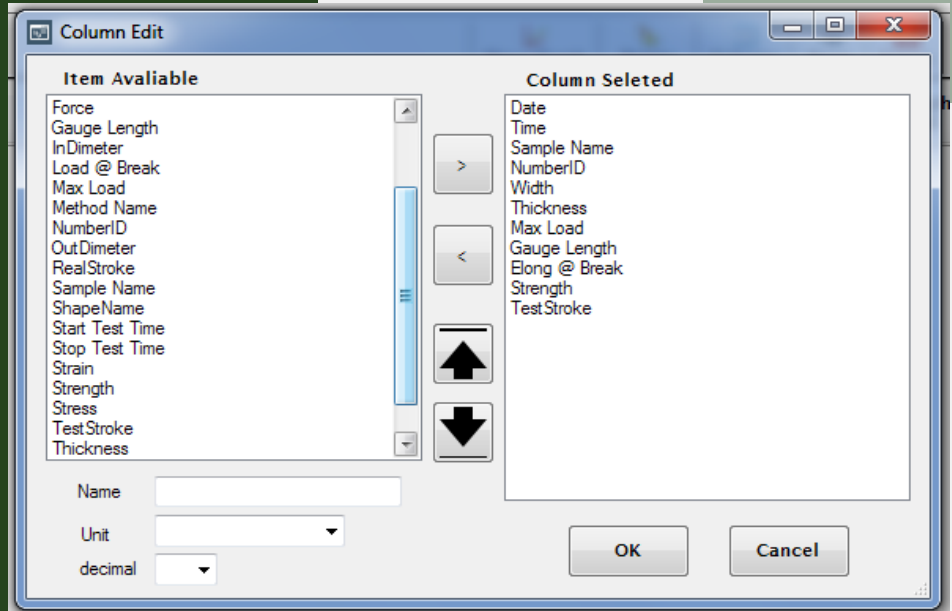
# YouTube Guide



# Formula Design By User



# Selectable Result



# Results can Be color Coded for Immediate Pass/fail recognition

