

TG34 Vice Action Grip for Thin Film

This general purpose, vice action grip is ideal for thin film samples.

They feature an easy to use screw action and are fitted with flat, rubber-coated jaw faces.

Capacity 500 N

Packaging Includes upper and lower grips.

Applications Used for tensile testing of paper, rubber, thin plastic film, woven and non-woven textiles.

Seal Strength , Peel Test , Tear Test , Elongation

Maximum Capacity 500 N

Maximum Sample Width 25 mm

Maximum Sample Thickness 3 mm

Eye End Diameter 16 mm

Weight Each 0.5 Kg

Length Each 75 mm



TG34N Pneumatically Actuated Vice Grip

This pneumatically actuated vice action grip is operated with a foot pedal

(grip types are supplied with standard plain 40 x 40 mm rubber faces. Optional jaw faces are available.)

Packaging Includes upper and lower grips with standard plain rubber faces.

Applications

General purpose tensile testing for paper, rubber, plastic, textiles and other materials where self-tightening is required. Seal Strength , Peel Test , Tear Test , Elongation

Maximum Capacity 500 N

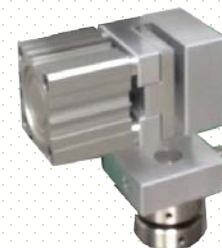
Maximum Sample Width 40 mm

Maximum Sample Thickness 3 mm

Eye End Diameter 16 mm

Weight Each 0.7 Kg

Length Each 85 mm



TG12 Bollard Grip

Bollard grip for wire, yarns and threads. The sample is wrapped around the bollard and the free end clamped firmly in place. Grip stresses in the specimen are distributed in the material in contact with the bollard circumference.

Capacity 2 kN,

Packaging Includes upper and lower grip.

Specification

Maximum Capacity 2 kN

Bollard Diameter 32 mm

Max. Sample Diameter 5 mm

Eye End Diameter 16 mm

Weight (Each) 0.3 Kg



TG300 Extra Pressure Vice Grip

This vice action grip is supplied with an independent tightening tool for applying extra pressure.

One grip face is corrugated, the other is serrated to prevent the sample from slipping during the test.

Packaging Includes upper and lower grips.

Applications

Used for tensile testing of textiles and leather.

Specification

Maximum Capacity 5 kN

Maximum Sample Width 60 mm

Maximum Sample Thickness 10 mm

Gripping Length 35 mm

Eye End Diameter 16 mm

Weight Each 1.7 Kg

Length Each 70 mm



TG64 Circular Direct Compression Platens

Circular direct compression platens intended for samples up to 150 mm in diameter.

Packaging with upper and lower

Applications

Used for general purpose compression testing of a wide variety of materials and products.

Specification

Maximum Capacity 1 kN up to 100KN

Maximum Sample Diameter 150 mm

Eye End Diameter 16 mm

Weight Each 1.5 to 5 Kg



TG10 Eccentric Roller Grip

General purpose, self-tightening grips feature an eccentric roller design ideal for dumbbell and flat specimens. The roller operates using a basic cam jamming principle. The rollers have a cross-hatched, serrated finish that helps prevent slipping. Clamps hold the sample securely against the horizontally-grooved back face

Packaging

Includes upper and lower grip.

Applications

Ideal for tensile testing sheet materials including polymers and rubbers.

Specification

Maximum Capacity 1 kN

Maximum Sample Width 25 mm

Maximum Sample Thickness 5 mm

Eye End Diameter 16 mm

Weight Each 0.25 Kg

Length Each 85 mm



Coefficient of Sliding Friction Fixture

This fixture consists of a horizontal flat bed incorporating a suitable clamping device and a sled. The underside of the sled has a layer of smooth-faced foam rubber.

Capacity 100 N

Packaging

Includes fixture, clamping device and sled Weighth 200g.

Applications

Used to determine the static and kinetic coefficients of friction of plastic film and paper when sliding the specimen over itself under controlled test conditions.

Meet ASTM D1894,ISO8295,TAPPI T816,T549



Ball Probes

For determining surface hardness of products such as cheeses, fruits and vegetables, or the gel strength of Surimi products, the ball probe range features precision-engineered stainless steel ball-end probes,

This ball design of probe is ideal for testing products with uneven surfaces.

Applications

Hardness of product

Gel Strength or burst strength

Specification

Ball Diameter : 4 , 5 , 6 , 8,10, 25 mm

Screw Fitting : M6



Cylinder Probes

The principle of the cylindrical probe is that as the probe is forced into the sample, a shearing force acts which causes the sample to deform or rupture. This produces a curve showing load resulting from deformation.

Applications

Cylindrical probes have traditionally been used as general purpose compression probes for a wide range of applications, primarily for applying a deformation to a gel structure to determine the gel strength and elasticity.

They are also useful for applying a shearing force to a gel to determine its breaking strength and elasticity.

Many standards quote cylindrical probes for gel testing.

The Bloom value is a recognized standard for quoting the strength of a gel structure, particularly gelation.

Specification

Diameter : 4 , 5 , 6 , 8,10, 25 , 35 mm

Screw Fitting : M6



Cone Probes

Cone probes are supplied with a range of angles, from 15° to 90°. The selection of the appropriate cone is, in some cases, dependent upon the testing standard, or alternatively can be selected appropriately for the consistency of the material being tested.

Applications

Cone probes have been used for many years, particularly on penetrometers, for testing building industry products such as sealants and mastics, and the cosmetics and pharmaceutical industries for testing creams and pastes. Cone probes are useful for determining the spreadability of dairy products such as margarine, butter and spreads.

Packaging 15°, 45° & 90°.



Warner Bratzler Shear Blade Set

The jig consists of a rigid frame supporting a shear bar. Interchangeable shear blades fit into the frame.

Capacity 500 N

Packaging

The kit is supplied with two blades: A square cut blade, a 'V' blade.



Spaghetti Noodle Testing Fixture

The set consists of two roller grips, designed for tensile testing of food products such as spaghetti and noodles.

Capacity 200 N

Packaging

Complete upper and lower jig.



3-Point Bend Test for Food

Three point bend jig for general purpose food sample fracture testing.

Capacity : 500N

Packaging

Complete jig.



Back Extrusion Food Cell

The Back Extrusion Food Cell consists of a circular plunger which is driven into a larger cylinder to compress the food sample and force it through the gap between the plunger and the container.

This results in a peak compression force and then a fluctuating compression force.

Capacity : 500 N,

Packaging :

The kit is supplied with three different diameter plungers



Texture Analysis Accessory Kits

A range of texture analysis accessories kits are available. Each kit consists of specially selected jigs and probes for analysis of specific food types. Application of a texture analysis system in an organization can highlight numerous quality improvement opportunities and other benefits through operations, typically research and development, production/process control, and quality assurance/control.

Bakery Accessories Kit

A Bakery Kit containing the following items:-

3-point bend jig

Dough firmness testing set

Comparative dough stickiness measurements jig

Crisp fracture support jig

25 mm diameter cylinder probe

Confectionery Accessories Kit

A Confectionery Kit containing the following items:-

3 point bend jig

4 mm diameter cylinder probe

25 diameter cylinder probe

4 mm diameter ball probe

12mm diameter ball probe

Dairy Accessories Kit

A Dairy Kit consisting of the following items:-

Butter cutting jig

50 mm diameter cylinder probe

2 mm diameter cylinder probe

4 mm diameter cylinder probe

General Food Probe Kit

This probe set contains the following items:-

6 mm diameter cylinder probe

25 mm diameter cylinder probe

12 mm diameter ball probe

25 mm diameter ball probe