



UNIVERSAL TESTING MACHINE

Made In Thailand

BRAVO
By **Tech Quality Co.,Ltd.**

The Stealth MT Pro Series desktop Universal Testing Machine are designed to test a wide spectrum of materials including metal wire & foil, plastics, rubber, textiles, paper, yarn, adhesives, ceramics, timber, foods, composites & finished components in tension, compression, flexural or shear . Maximum frame capacities are from 20N to 50KN In compliance with various international standards, such as ASTM, BS EN, JIS, ISO, IEC, TISI

Made In Thailand

Features

1. Panasonic servo motor drive set
2. UK or JAPAN Brand Load cell grade 0.05%
3. 10 Point calibration adjustment
4. High Accuracy Ball Screw
5. Load Resolution $1/10^9$
6. Force measurement range 0.1% to 100%FS
7. Data Transfer Rate to PC 1 kHz..
8. Automatically sample Height measurement
9. Modern extruded profile High-quality load-frame design
10. Load Measuring System EN ISO 7500:2015 Class 0.5
11. USB or Wireless Communication or Ethernet
12. Smart Control Box & HAND-HELD Remote control
13. 32-bit A/D converter/ EEPROM Plug
14. 7" Capacitive Touch Screen stand-alone system*



Simple to use Test Setup

Limit Testing Break Testing Loop Testing Preload
Setup Elongation Auto Return, Over Load Protection

Multi-control mode

- Constant speed
- Position
- Load Rate
- Constant Stress & Strain
- Multi-step control

Applications

Metal, Plastic, Rubber, Textile, Synthetic, Wire, Cable,
Food, Packaging, Autopart, Spring, AeroSpace, Woods,
Composit etc.

Test Types

Tensile Testing • Compression Testing • Flexural
Testing • Friction • Insertion/Extraction • Peeling •
Tearing • Creep/Relaxation

***Optional** : 7" Capacitive Touch Screen stand-alone
system designed specifically for quick and easy
Tension and compression testing by unskilled

Specifications : Bench-top frame to apply loads - from 5 KN to 50 KN capacity

Model : Stealth	MT5 Pro	MT10 Pro	MT20 Pro	MT30 Pro	MT50 Pro
Capacity (KN)	5	10	20	30	50
Load Accuracy (%) FS	0.1	0.1	0.1	0.1	0.1
Min. Load Resolution	1/10 ⁹	1/10 ⁹	1/10 ⁹	1/10 ⁹	1/10 ⁹
Crosshead Speed (mm/min)	0.0001 – 1250	0.0001 - 1250	0.0001 - 1250	0.0001 - 1000	0.0001 - 600
Speed Accuracy (%) FS	0.1	0.1	0.1	0.1	0.1
Extension Resolution (µm per encoder count)	0.0003	0.0003	0.0003	0.0003	0.0003
Crosshead Travel (mm)	1,080	1,080	1,080	1,080	1,080
Crosshead Travel Extended (mm)	1,308	1,308	1,308	1,308	1,308
Width Between Columns (mm) can be offered upon request	400, 500 or 650	400, 500 or 650	400, 500 or 650	400, 500 or 650	400, 500 or 650
Weight Approx (kg) can be offered upon request	130	130	130	160	170
Load Measuring System : EN ISO 7500-1:2015, Class 0.5 ASTM E4					
Plug 'n' Play, automatic identification of BRAVO series load cells					
The Windows® 10 (64 Bit) compatible Black Hole Software					
Power 220Vac/ 50Hz					
Operating Temperature 5° to 35°C (41° to 95°F)					
Warranty 1 Year					

Sample Information & Connect to Mitutoyo Gauge

Sample

Shape: 3 Point Bending

Sample Name: Number:

Unit: mm

Parameter(mm)

Width: 10.000 Thickness: 10.000 ID: 0.0 OD: 0.0

Gauge Length: 50.000 Diameter: 0.0 Span length: 50.000

☒ Auto Select Tab Number:

Picture

Statistic Reports

Template

HOME

New Save SaveAs Report Column Statics Images HeaderAdd Remove

Clipboard

Template Name:

Header Value

Min Max Mean SD COV

Multi-stage testing with Black Hole software

Program Toolbox 1.0.0.4

New Open Save Delete Add Update Verify Remove Templates:

Directions: Compress Speed:Unit 99mm/min Break Type Load Shift <= Target 1:kgf

Step	Direct	Control Break Type	Speed:mm/min	Target:Unit
1	Tensile	PreLoad	1000mm/min	1:N
2	Tensile	Load	50mm/min	15:N
3	Tensile	Stroke	300mm/min	29mm
4	Tensile	Stress	20mm/min	10kgf/mm2
5	Compress	Load	99mm/min	1kgf

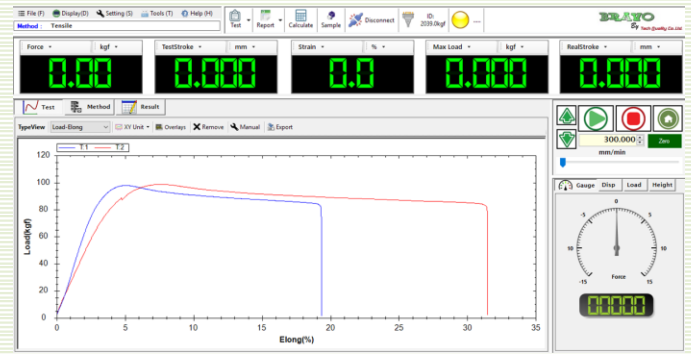
Multi Display - Unit & Decimal Point

Displays ToolBox

Display	Variable	Unit	Decimal
Display 1	Strength	MPa	3
Display 2	TestStroke	um	4
Display 3	Timer	s	3
Display 4	TestStroke	mm	3
Display 5	Force	kgf	3

gf kgf N kN lbf

Software & Report



Excel csv ,Excel , PDF User design Reports

Tech Quality Co.,Ltd.

Test By: Mr. Nukool Boonklam

Test Standard: ASTM D882 Thin Plastic Sheet

Temperature: 25C

Humidity: 55%

No	Date	Gauge Length (mm)	Thickness (mm)	Width (mm)	Max Load (kgf)	Strength (MPa)	Elong @ Break (%)
T1	28/5/2016	50.0000	10.0000	10.0000	5.1071	0.5008	80.5000
T2	28/5/2016	50.0000	10.0000	10.0000	6.1989	0.6078	13.3882
T3	28/5/2016	50.0000	10.0000	10.0000	5.0235	0.4926	100.5591
T4	28/5/2016	50.0000	10.0000	10.0000	5.0285	0.4931	101.2256
T5	28/5/2016	50.0000	10.0000	10.0000	8.2144	0.5888	118.5042
T6	28/5/2016	50.0000	10.0000	10.0000	6.0218	0.5919	83.9473
T7	28/5/2016	50.0000	10.0000	10.0000	5.0220	0.4925	80.2068
T8	28/5/2016	50.0000	10.0000	10.0000	4.0101	0.3953	85.4156
T9	28/5/2016	50.0000	10.0000	10.0000	6.0369	0.5920	96.4304
T10	28/5/2016	50.0000	10.0000	10.0000	5.1284	0.5030	10.5790
T11	28/5/2016	50.0000	10.0000	10.0000	6.8259	0.6792	9.1414
T12	28/5/2016	50.0000	10.0000	10.0000	7.2116	0.7072	11.6477
Min		50	10	10	4.0101	0.3953	9.1414
Max		50	10	10	7.2116	0.7072	118.5042
Mean		50	10	10	5.6439	0.5535	64.9001
SD		0	0	0	0.8152	0.0887	41.8927
COV		0	0	0	16.2148	16.2145	64.182

Print Export Export

Auto test setup & load protect &return speed

Test Method Result

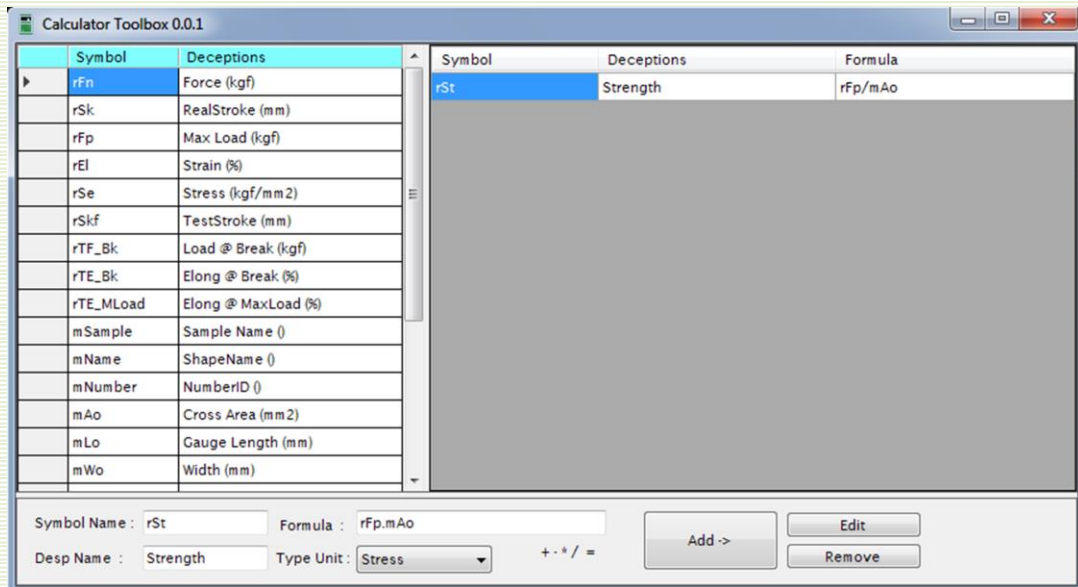
☒ Auto Zero before Test ☒ Auto Save after Test Complete ☒ Auto Return to home after Test ☐ Auto Return to Limit after Test

Return Speed: 1500.0 mm/min

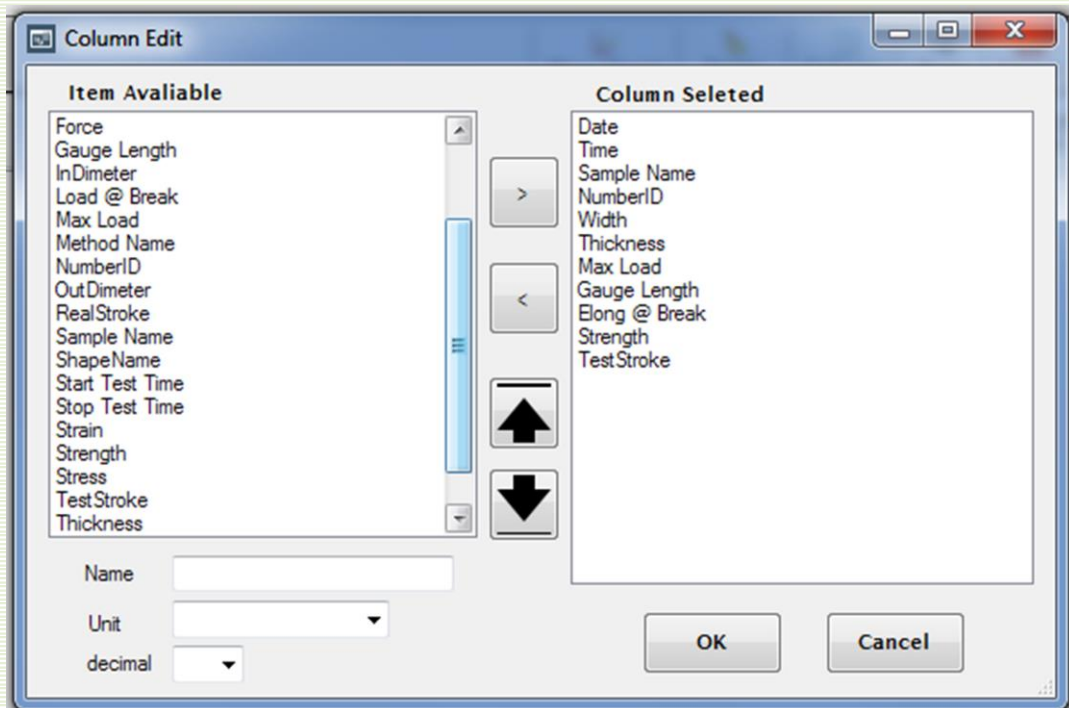
Load Protect: 50 %

10.00 kgf

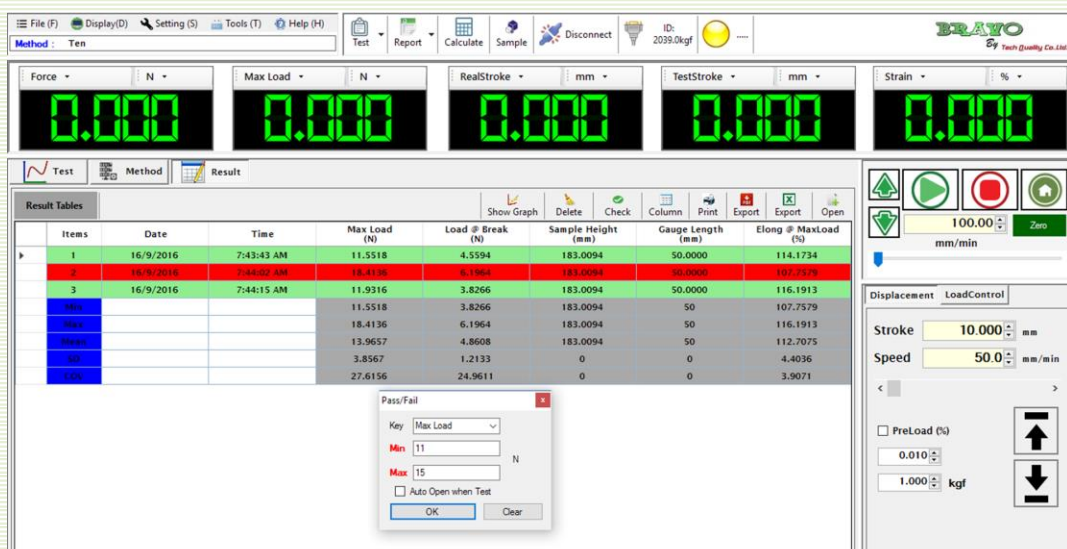
Formula Design by user



Selectable Result



Results can be color coded for immediate pass/fail recognition.



Modern Aluminum extruded profile High-quality load-frame design

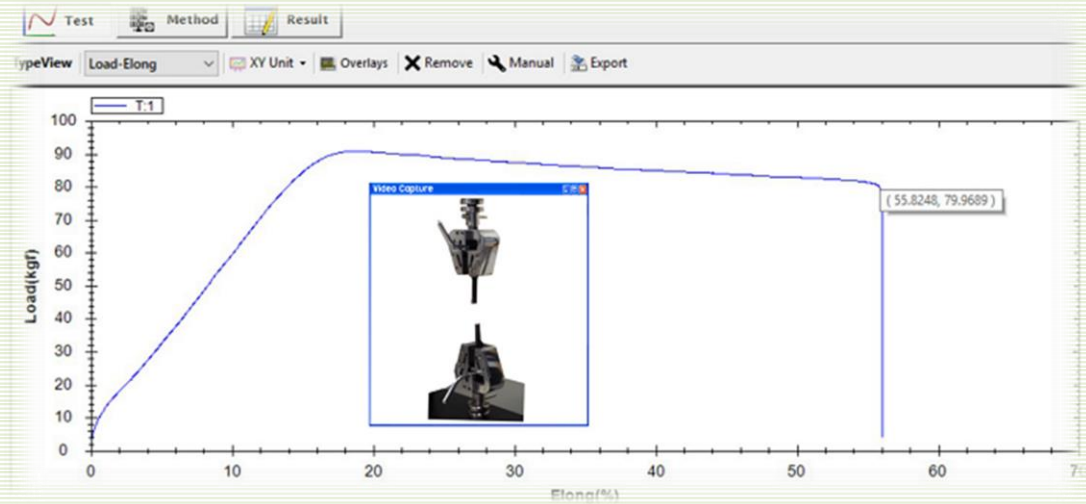


Modern Aluminum extruded profile High-quality load-frame design

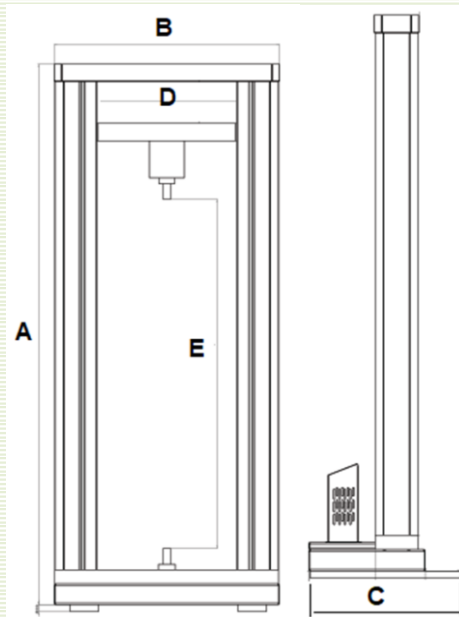


Video and still capture

Video Capture and Synchronisation System enables UTM users to view 20fps video recordings frame by frame. it's a fantastic tool for teaching physical material test for those new to the field, or to help you gain a frame-by-frame understanding of your product strength.



Dimension



		mm	Customized/mm	Remark
A	Machine Height	1550		
B	Machine Width	698		
C	Machine Depth	424		
D	Between Columns	400		
E	Crosshead Travel	1080		

Ordering Information

Tech Quality Co.,Ltd.
 2/13 Sukapiban 2 Rd., Pravet , Pravet,
 Bangkok 10250 Thailand
 Tel : +662 328 6878 (Auto)
 Fax : +662 328 6818
www.tech-quality.com
 email: info@tech-quality.com